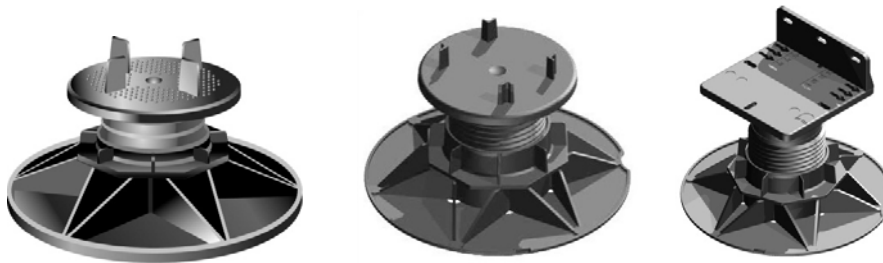




Adjustable Support Pads

ASP, TD, TD PLUS & TD Mobile Range

185-220mm High
Weight Tolerance Test Data Sheet



Description	Adjustable Support Pad
Height Adjustment	185-220mm
Material	Polypropylene
Diameter of Head Piece	120mm
Diameter of Screw	73mm
Diameter of Nut	106 x 106mm
Diameter of Base	200mm
Conditioning	23±2 °C / 50± 5%
Conditions of Test	Room temperature
Test Equipment	Dynamometer Instron model 5500R graduated from the centre
Test Method	The support pad is subject to compression between two rigid plates up to the maximum load
Rate of Test	5mm per minute

Test No.	Height Adjustment mm	Maximum Load N	Deformation at maximum load
1	160	14159	11.2
2	160	14008	9.5
3	160	13713	8.8
4	160	14027	9.2
5	160	13730	9.7
	Average value	13927 N	9.6 mm
	Standard deviation	196 N	0.9mm
	Variation	1%	9.4%

Wallbarn Ltd

Unit 16 Capital Business Centre, 22 Carlton Road
South Croydon, Surrey CR2 0BS, United Kingdom
Email: sales@wallbarn.com Web: www.wallbarn.com