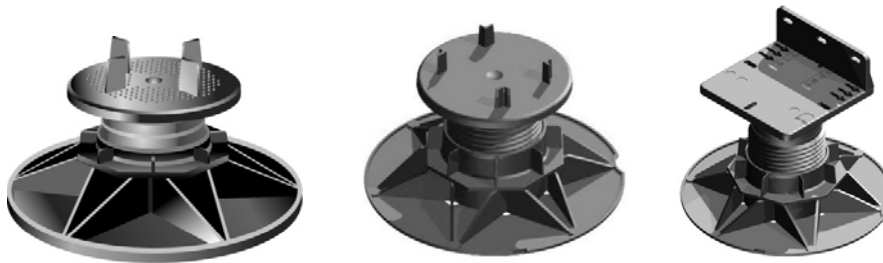




Adjustable Support Pads

ASP, TD, TD PLUS & TD Mobile Range

125-160mm High
Weight Tolerance Test Data Sheet



Description	Adjustable Support Pad
Height Adjustment	125-160mm
Material	Polypropylene
Diameter of Head Piece	120mm
Diameter of Screw	73mm
Diameter of Nut	106 x 106mm
Diameter of Base	200mm
Conditioning	23±2 °C / 50± 5%
Conditions of Test	Room temperature
Test Equipment	Dynamometer Instron model 5500R graduated from the centre
Test Method	The support pad is subject to compression between two rigid plates up to the maximum load
Rate of Test	5mm per minute

Test No.	Height Adjustment mm	Maximum Load N	Deformation at maximum load
1	160	15194	9.4
2	160	14885	9.2
3	160	14733	8.6
4	160	14867	8.5
5	160	14955	8.6
	Average value	14926 N	8.8 mm
	Standard deviation	169 N	0.4mm
	Variation	1%	4.6%

Wallbarn Ltd

Unit 16 Capital Business Centre, 22 Carlton Road
South Croydon, Surrey CR2 0BS, United Kingdom
Email: sales@wallbarn.com Web: www.wallbarn.com