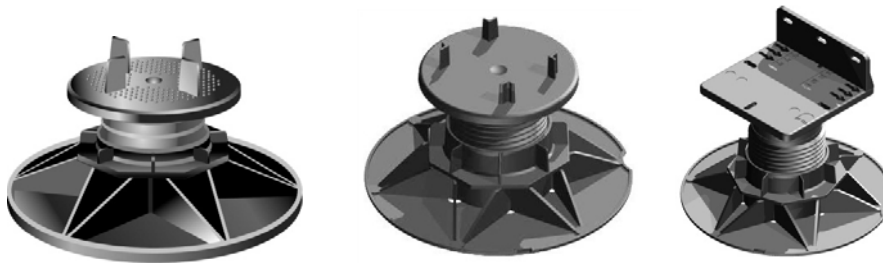




Adjustable Support Pads

ASP, TD, TD PLUS & TD Mobile Range

65-100mm High Weight Tolerance Test Data Sheet



Description	Adjustable Support Pad
Height Adjustment	65-100mm
Material	Polypropylene
Diameter of Head Piece	120mm
Diameter of Screw	73mm
Diameter of Nut	106 x 106mm
Diameter of Base	200mm
Conditioning	23±2 °C / 50± 5%
Conditions of Test	Room temperature
Test Equipment	Dynamometer Instron model 5500R graduated from the centre
Test Method	The support pad is subject to compression between two rigid plates up to the maximum load
Rate of Test	5mm per minute

Test No.	Height Adjustment mm	Maximum Load N	Deformation at maximum load
1	160	18118	8.4
2	160	17264	8.5
3	160	17389	8.6
4	160	17399	9.2
5	160	16947	8.3
	Average value	17423 N	8.6 mm
	Standard deviation	429 N	0.3mm
	Variation	2%	4.1%

Wallbarn Ltd

Unit 16 Capital Business Centre, 22 Carlton Road
South Croydon, Surrey CR2 0BS, United Kingdom
Email: sales@wallbarn.com Web: www.wallbarn.com