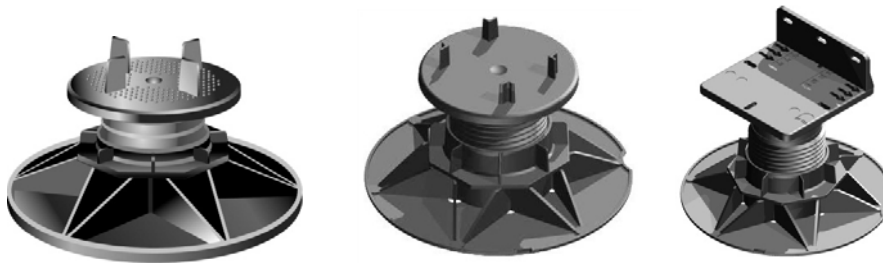




Adjustable Support Pads

ASP, TD, TD PLUS & TD Mobile Range

95-130mm High
Weight Tolerance Test Data Sheet



Description	Adjustable Support Pad
Height Adjustment	95-130mm
Material	Polypropylene
Diameter of Head Piece	120mm
Diameter of Screw	73mm
Diameter of Nut	106 x 106mm
Diameter of Base	200mm
Conditioning	23±2 °C / 50± 5%
Conditions of Test	Room temperature
Test Equipment	Dynamometer Instron model 5500R graduated from the centre
Test Method	The support pad is subject to compression between two rigid plates up to the maximum load
Rate of Test	5mm per minute

Test No.	Height Adjustment mm	Maximum Load N	Deformation at maximum load
1	160	15628	8.5
2	160	15644	8.0
3	160	15651	8.8
4	160	15660	8.0
5	160	15530	7.5
	Average value	15622 N	8.1 mm
	Standard deviation	53 N	0.5mm
	Variation	0%	6.1%

Wallbarn Ltd

Unit 16 Capital Business Centre, 22 Carlton Road
South Croydon, Surrey CR2 0BS, United Kingdom
Email: sales@wallbarn.com Web: www.wallbarn.com