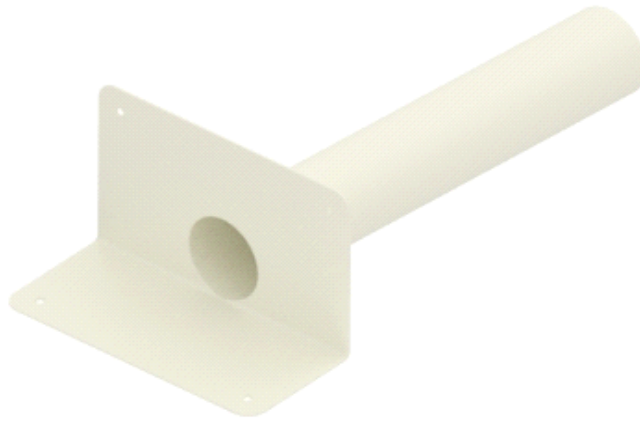




Data sheet

PVC Corner Outlet (Round Shank)



Function:

Through wall / corner fittings are designed to be welded to synthetic PVC roofing membranes around rainwater roof drains up to a wall / parapet. They have a round mouth and round spigot.

The flange is soft and floppy and easy to manipulate. It is slightly inclined back from the face towards the shank to help create a secure seal.

The flange has holes for mechanical fixing if required. Welding should only be carried out with a hot air gun, not a naked flame.

Always prime outlet and membrane before installation.

Compatibility:

They are compatible with single ply / PVC sheet membranes.

Range:

DN 50 - DN 63 - DN 75 - DN 90 - DN 110 - DN 125

Performance:

Resistant to deterioration by the sun, ozone and other agents or chemicals normally found in the atmosphere. They have excellent flexibility even at low temperatures. The mechanical properties are maintained in the long term.

Operating temperature: -20°C; +70°C

Included accessories: N/A

Material: PVC

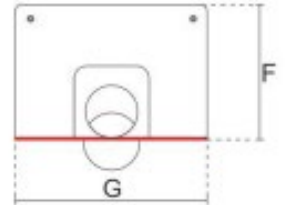
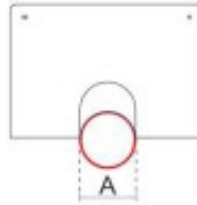
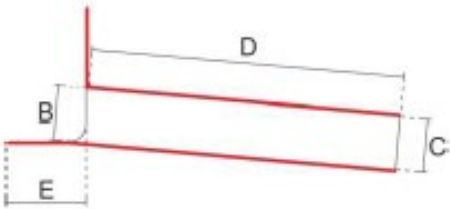
Optional accessories: Tapered joint, Gravel excluders

Recycled product: No

Recyclable: Yes

Data Sheet

PVC Corner Outlet (Round Shank)



| Item | Description | A | B | C | D | E | F | G |
|--------------------------|--|-----|-----|-----|-----|-----|-----|-----|
| RO-PVC-120-350-500-050-Z | PVC Corner Outlet (round shank) L500mm - D50mm | 50 | 43 | 44 | 500 | 110 | 120 | 260 |
| RO-PVC-120-350-500-063-Z | PVC Corner Outlet (round shank) L500mm - D63mm | 63 | 56 | 57 | 500 | 130 | 175 | 304 |
| RO-PVC-120-350-500-075-Z | PVC Corner Outlet (round shank) L500mm - D75mm | 75 | 68 | 69 | 500 | 130 | 175 | 304 |
| RO-PVC-120-350-500-090-Z | PVC Corner Outlet (round shank) L500mm - D90mm | 90 | 83 | 84 | 500 | 130 | 175 | 304 |
| RO-PVC-120-350-500-110-Z | PVC Corner Outlet (round shank) L500mm - D110mm | 110 | 103 | 104 | 500 | 130 | 215 | 304 |
| RO-PVC-120-350-500-125-Z | PVC Corner Outlet (round shank) L500mm - D125mm | 125 | 115 | 119 | 500 | 130 | 260 | 360 |

Additional Information:

For more information on interface with connectors etc. please refer to the corresponding Accessories datasheets.

