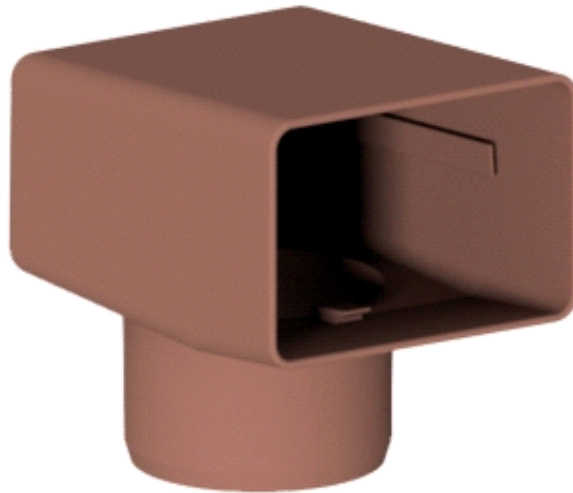




Data sheet

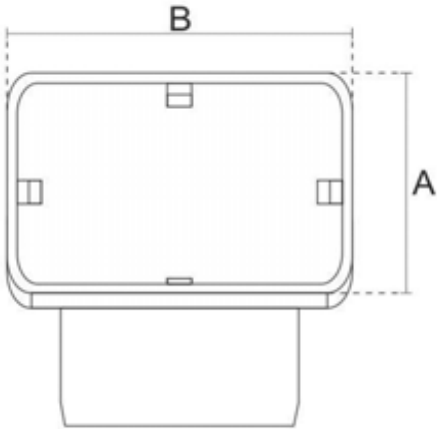
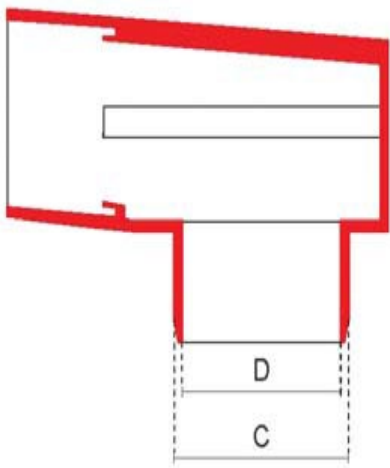
Coupling-Right Angle-Square Spigot



Function:	The bend couplings are designed to lock around the outlet spigot to channel the rainwater from the through wall / corner fittings into the HDPE vertical drainpipe. They have four internal wings which the walls of the outlet can click into, providing a secure fitting and avoids shape distortion in the long term.		
Compatibility:	They can be used with through wall / corner outlet fittings which have a rectangular spigot.		
Range:	DN80 DN100		
Performance:	Resistant to deterioration by the sun, ozone and normal atmospheric conditions. They have excellent flexibility even at low temperatures and will not become brittle. The mechanical properties are maintained in the long term.		
Operating: Temperature	-20°C; +70°C		
Included accessories:	N/A	Recycled Product:	No
Optional accessories:	N/A	Recyclable Product:	Yes
		Material:	PP
Additional Information:	Resistant to UV light degradation		

Data sheet

Coupling-Right Angle-Square Spigot



Item	Description	A	B	C	D
RO-BEND-SQ-210-300-100-080-Z	Coupling - Right Angle - Square Spigot 100 x 100mm x 80mm	100	100	77	73
RO-BEND-SQ-210-300-100-100-Z	Coupling - Right Angle - Square Spigot 100 x 100mm x 100mm	100	100	97	92