



OPERATIONS & MAINTENANCE MANUAL

MEGA BALANCE ADJUSTABLE HEIGHT PEDESTALS



Date **11/01/2023**

PRODUCT DESCRIPTION

MEGA BALANCE PEDESTALS – Adjustable Height Pedestals for use with suspended paving and decking systems with a self-leveling headpiece and a variety of headpiece designs for different applications.

25-1025mm in height – injection moulded support pedestals made from virgin fibre Polypropylene (PP) with no fillers. Packed into boxes of 20 units each. Weight tolerance per unit = 1,560kg.

PHYSICAL AND CHEMICAL PROPERTIES

Height	Weight Tolerance		
25-30mm	Maximum Load: 20,713 N = 2,057kg End of Linear Behaviour: 15,300N = 1,560kg CATAS Test Score 179112 / 1		
30-37mm			
37-50mm			
50-75mm			
75-125mm			
125-225mm			
225-325mm			
325-425mm			
425-525mm			
525-625mm			
625-725mm			
725-825mm			
825-925mm			
925-1025mm			
The Grey Nut The Black Nut			
Material	Polypropylene		
Diameter of Head Piece	150mm		
Diameter of Screw	140mm		
Diameter of Base	200mm		
Lug width (paving)	4mm		
Distance between lugs (Clip head for aluminium rail)	60mm		
		Score	Test Method
Melt Flow rate		14-16 Gr / 10'	ASTM D 1238
Weight / density		0.99-1.04 Gr / cm3	ASTM D 792 Method A
Softening point with load of 5kg (VICAT test)		>75 °C	ASTM D 1525
Heat Deflection Test with load of 1820 kPa		> 90 °C	ASTM D 648
Coefficient of elasticity		1600 Mpa	ASTM D 790
Impact resistance (Izod test - at 23°C)		>40 J/m	ASTM D 256
Impact resistance (Izod test - at minus 20°C)		>20 J/m	ASTM D 256
Max Weight Tolerance at minus 40°C		27.830 N	CATAS 179112 / 1
Fire classification	All MEGA BALANCE pedestals are classified as "EUROCLASS E" according to EN 13501-1:2009 as standard; "EUROCLASS B1" are available by special request		

Appearance	Black injection moulded pedestal
Odour	None
pH	n/a
Boiling point	n/a
Softening point	>75°C
Flash point	n/a
Fire classification	EuroClass E
Toxicity	These products are not classified as toxic

The Key



Material	Powder coated Stainless Steel
Odour	None
Weight	200 grammes
Length of shaft	160 mm
Length of arms	150 mm
Diameter	15 mm
Fire classification	EuroClass A
Toxicity	These products are not classified as toxic
How to Use The Key	https://www.youtube.com/watch?v=Ky8WMTR67xQ

PRODUCT INFORMATION

<https://www.wallbarn.com/pedestals-2/self-levelling-heavy-duty/>

PRODUCT ASSEMBLY

Please see assembly and instruction video here

<https://www.youtube.com/watch?v=LXGMoyKf-80&t=5s> .

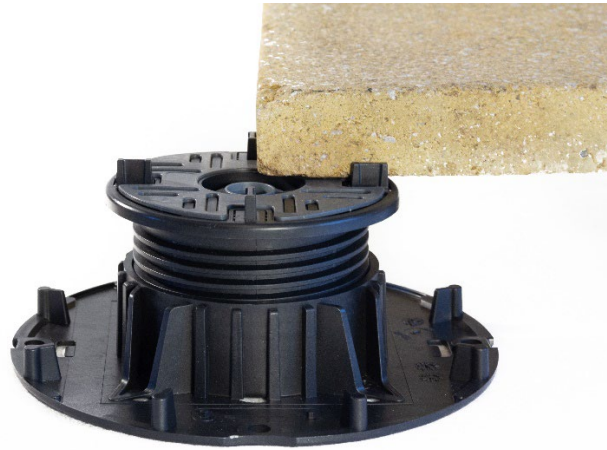
PRODUCT INSTALLATION

To be used on predominantly flat decks. Suitable for flat roofs, podium decks, balconies, terraces and walkways.

Units to be placed onto the structural decks, sufficiently strong to tolerate the weight of the system. Waterproofing membranes to be adequately protected before installation of units to prevent point loading and / or puncturing of membrane.

Pedestals are usually loose laid without mechanical fixings or adhesive to allow them to move independently from the structural building and prevent stress points. However, if fixing the pedestals into the subdeck is required (and waterproofing seals etc. are not compromised) mechanical fixings can be fitted through series of holes moulded into the baseplates.

For Paving



Slabs / tiles are loose laid onto headpieces between four integrated lugs to position and separate them and provide 4mm gap for drainage. The Yellow Key is used to adjust the height of the pedestal after the full system has been installed without having to lift the slab / tile <https://www.youtube.com/watch?v=Ky8WMTR67xQ> .

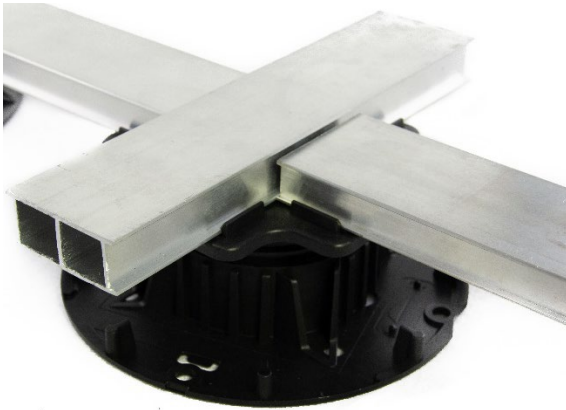
For Decking



Place timber or composite joist onto headpiece between the positioning lugs so it is suspended on top of the pedestal. There is no need to mechanically fix the joists to the pedestals.

Cross fix the joists to form a framework. Adjust the height of the pedestals to create a flat framework level. Fix the decking boards perpendicular to the main joist beams using top fixings or side fixings.

For Decking with aluminium rails



Use Mega Balance in conjunction with the Wallbarn Aluminium Rail System <https://www.youtube.com/watch?v=wJDIBdvxOyU> .

Profiled Aluminium rails click into spring loaded clips on headpiece of Mega balance pedestal to give secure fit without the need for mechanical fixings. Telescopic stems on pedestals are twisted to alter the height so that the rails are flat and level in height. Decking boards are fixed to aluminium rails.

Pedestals should be placed a maximum of 600mm apart.

For Paving with Rail System

Install pedestals and rails in the same way as for Decking system above but use additional Top Headpiece on upper side of the rail to support and position paving slabs / ceramic tiles <https://www.youtube.com/watch?v=UY8sJU2CRBI> for added lateral stability and smoother upper surface.

The Grey Nut



Mega Balance is supplied with a self-leveling headpiece as standard but the head can be locked in place by inserting the Grey Nut into the centre of the headpiece https://www.youtube.com/watch?v=cW7_WXMU22U .

MAINTENANCE DETAILS

Products are designed to be covered and not disturbed in the long-term.

Gaps between paving slabs / decking boards should be kept clear and free of debris to allow proper drainage of the upper surface and prevent ponding and slip hazards.

Cavities between the structural subdeck and the surface material (paving / decking) should be inspected at regular intervals (at least once per year) to ensure drainage channels do not become blocked and flammable material does not collect. Jets of water should be used to remove limited amounts of debris, taking care not to block up or damage drainage outlets.

For large or compacted debris build-up, removal of the upper surface (paving or decking system) will be required to remove the debris. Removal should be carried out by machines if required.

HAZARDS IDENTIFICATION

The major hazards identified for these products are physical and include manual handling. Sparks may be generated from cutting processes.

FIRST-AID MEASURES

In event of cuts and damage from dropped timber, wash out wound with plenty of clean water. Seek medical attention

FIRE-FIGHTING MEASURES

These products do not constitute a fire hazard. Use extinguishing media appropriate to the surrounding fire conditions.

ACCIDENTAL RELEASE MEASURES

Damaged product can be taken up and disposed of to landfill as inert waste if necessary; however recycling is the preferred method of disposal. As supplied, the products are not classified as hazardous.

HANDLING AND STORAGE

When handling product, due regard should be paid to the risks outlined in the Manual Handling Operations Regulations 1992, appropriate PPE should be used.

When cutting the product with a saw, appropriate measures to control dust should be used. The product should be stored in a safe and stable manner.

PERSONAL PROTECTIVE EQUIPMENT:

Wear suitable protective clothing e.g. overalls, gloves and safety boots to reduce the chances of physical injury while using this product.

Local Exhaust Ventilation, goggles and a dust mask to the relevant European standard (EN149) may be required if a cutting method that liberates dust is used.

ECOLOGICAL INFORMATION

Subsequent to manufacture, this is a stable product with no known adverse environmental effects.

DISPOSAL CONSIDERATIONS

Dispose of this product at any approved solid waste disposal site. Disposal of the product should be in accordance with any local or national regulations although recycling is preferred.

WARRANTIES

A limited warranty exists that the products will comply with the test data as laid out earlier in document. Warranty is limited to replacement of products which have been installed in the correct manner and for the correct purpose only. Warranty is limited to the value of the cost price of the materials only, not replacement costs or any other labour cost.

TRANSPORT INFORMATION

Classification for conveyance: - None required.

KEY CONTACTS

Wallbarn Ltd.

Unit 16 Capital Business Centre, 22 Carlton Road, South Croydon CR2 0BS

Tel: +44 (0)208 916 2222 Fax: +44 (0)208 916 2223

Email: sales@wallbarn.com

Web: www.wallbarn.com

APPENDIX A:

The following table summarizes the documents and URLs referenced in this document.

Document Name	Location
Mega Balance website URL	https://www.wallbarn.com/pedestals-2/self-levelling-heavy-duty/
Wallbarn Ltd Terms & Conditions	https://www.wallbarn.com/terms-conditions-of-supply/