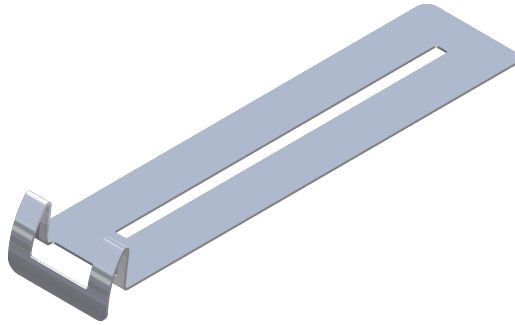




Technical Datasheet

Metal Edge Plate



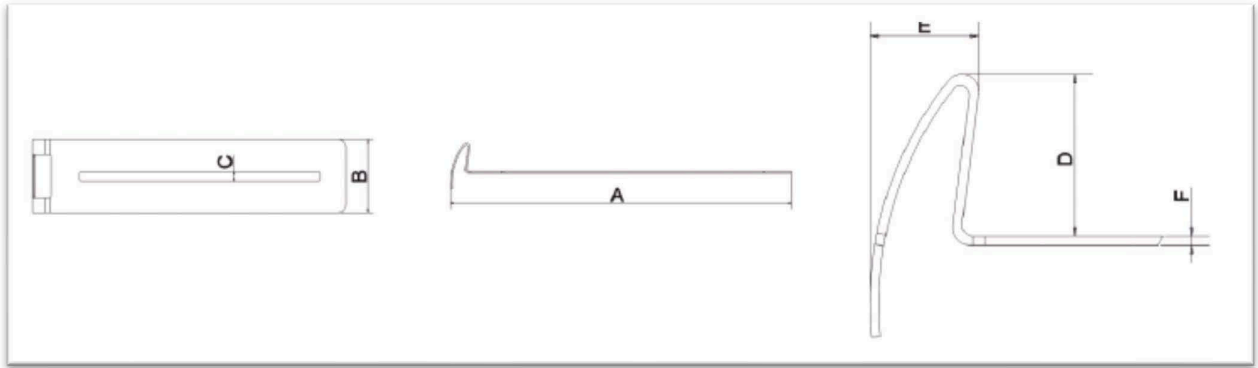
FUNCTION	<p>The Metal Edge Plate, is designed to prevent direct contact between paving slabs or tiles and the perimeter wall, upstand, or parapet. One side of the clip features a bull nose spring-loaded design that protects the wall, upstand, or parapet by absorbing impacts from the slabs or tiles. This clip also ensures adequate drainage in raised outdoor floors, maintaining a consistent gap between the tiles and the walls.</p> <p>Its shape and design allow it to accommodate small movements of the slabs or tiles. The central slit in the plate enables installers to place it over the lugs or fins on the headpieces of support pedestals and pads, ensuring a secure fit.</p>
COMPATIBILITY	Compatible with all Wallbarn's range of pedestals (with 2mm & 4mm Lugs on headpiece)
RECYCLED	No
RECYCLABLE	Yes
MATERIAL	AISI 316 BA finish - This grade is notable for its excellent resistance to corrosion and particularly its efficacy in salt-water and harsh environments.
THICKNESS	The plates are 1mm thick each and this needs to be added to the overall height when planning use of them.

Wallbarn Ltd
Unit 16 Capital Business Centre
22 Carlton Road, South Croydon. CR2 0BS

IMS.T.928.v2



Technical Datasheet



Item	Description	A	B	C	D	E	F
SP-EDGE-PLATE-Z	Metal Edge Plate for Paving	169mm	40mm	4mm	15mm	Max 10mm	1mm



Wallbarn Ltd
Unit 16 Capital Business Centre
22 Carlton Road, South Croydon. CR2 0BS

IMS.T.928.v2

Phone : 0208 916 2222 Email : sales@wallbarn.com Website : www.wallbarn.com